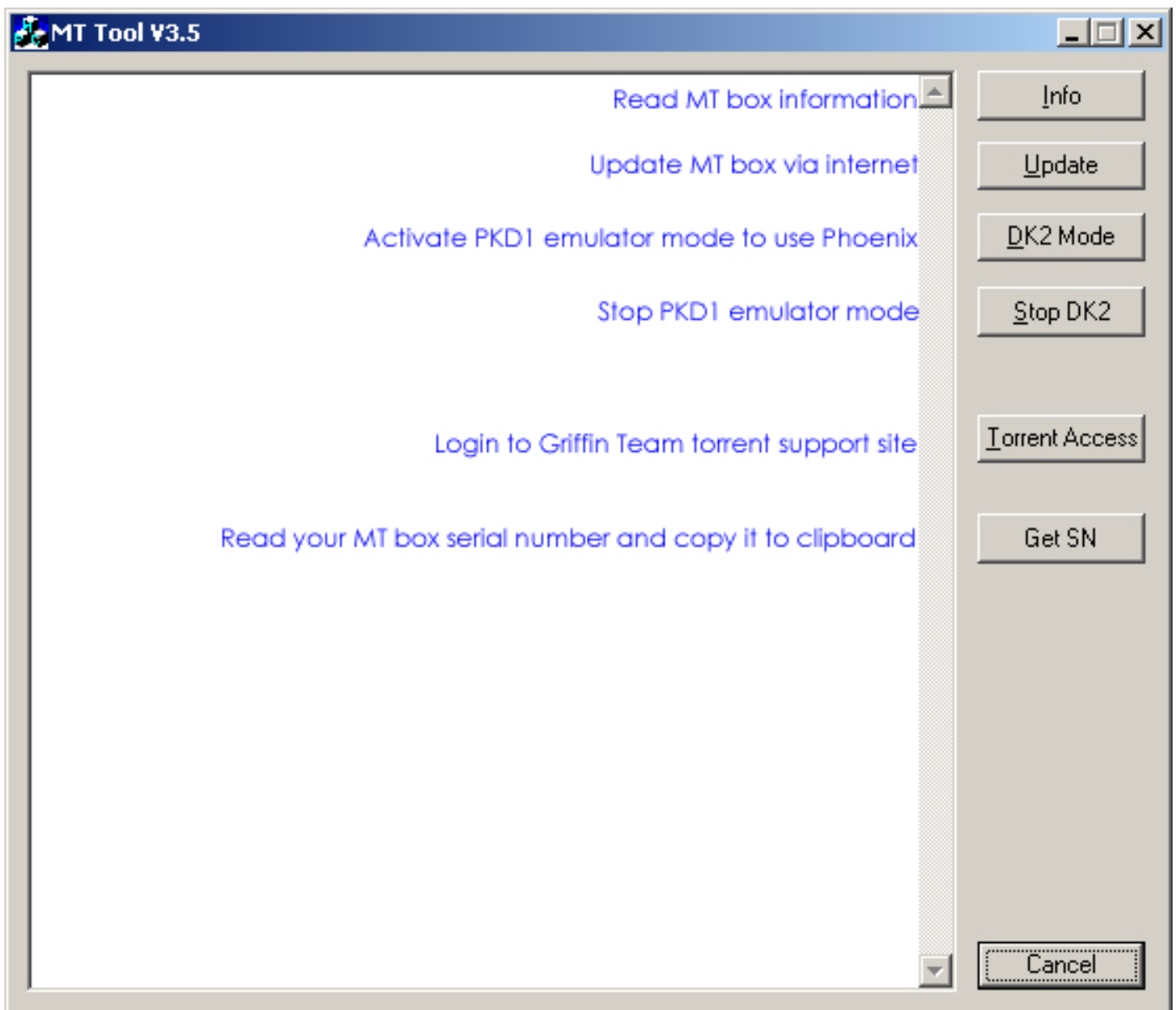
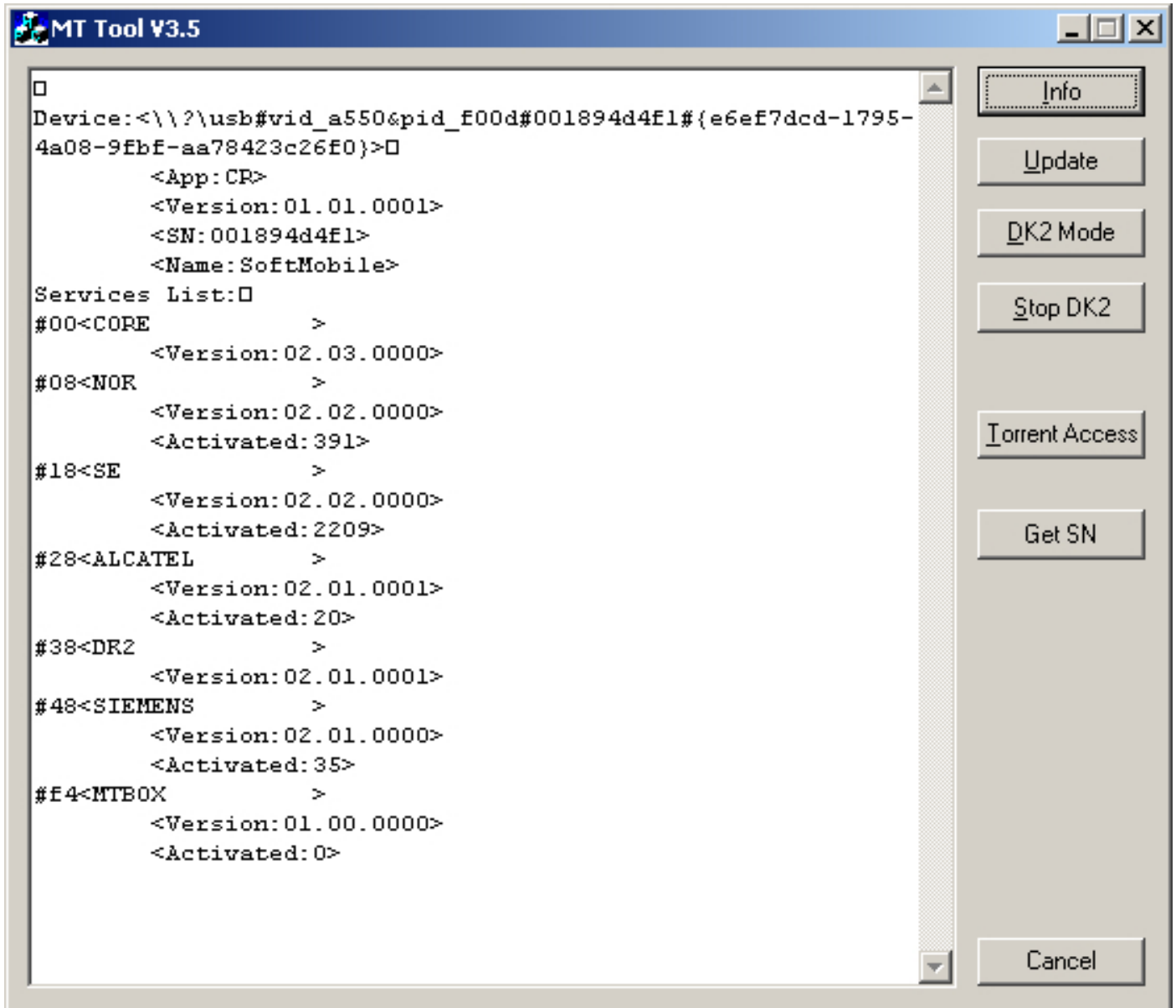


How to update MT box

Download from support site [MT update tool v3.5](#) and start it



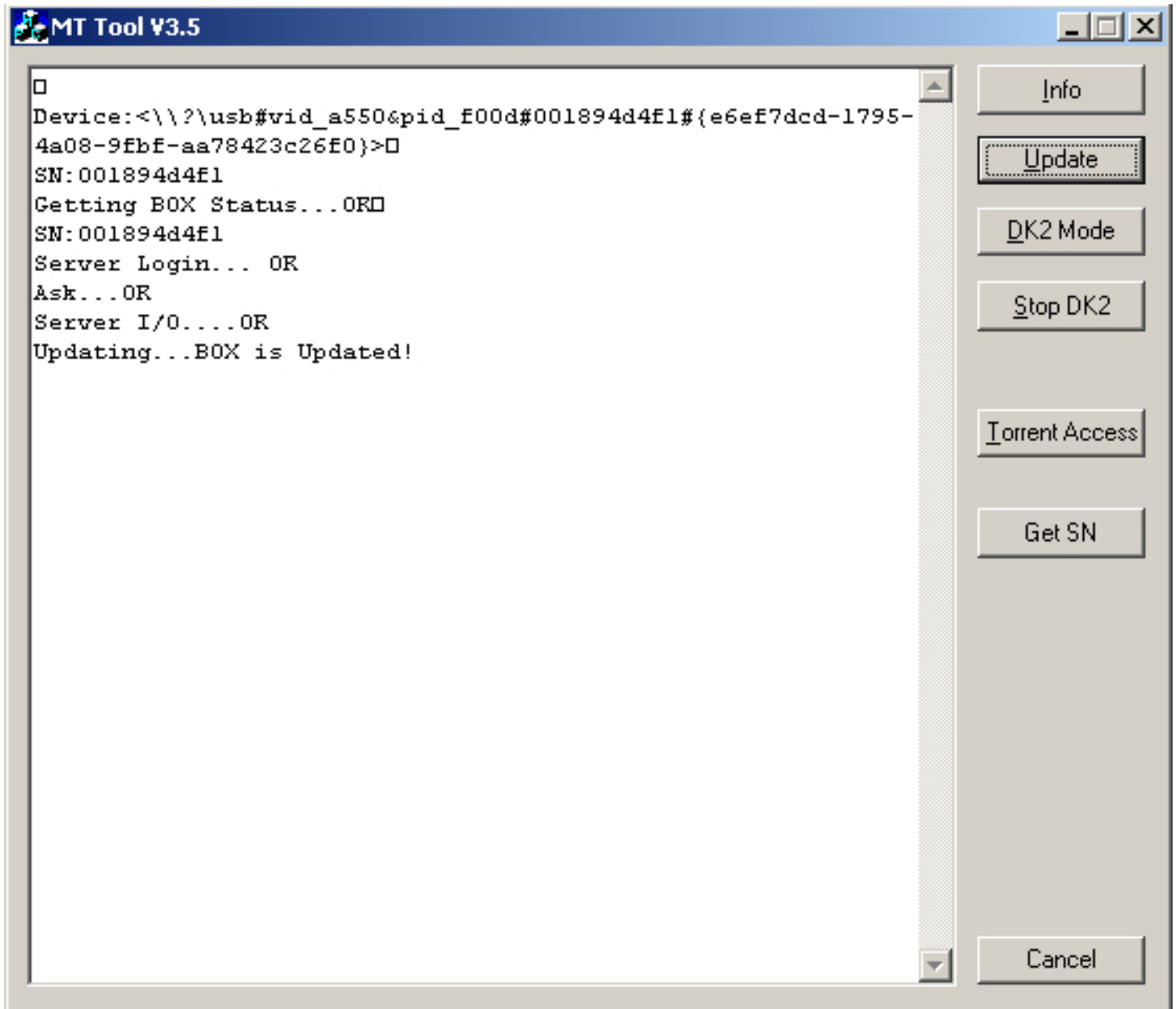
To see your box info press INFO button
There you can see your box Serial Number (SN) and counters



To stay tuned with incoming MT box updates, to able use latest software versions you need to update your MT box.

Please check it is available an update for your MT box by press UPDATE button.

Internet connection required.
Please allow internet access to MT Tool in your firewall if any.



Wait to software finish updating your box.

When you see this info update is done:

Updating.... BOX is Updated!

Now your box can use latest software realizes.

DK2 Mode button allows you to start using your MT box Nokia as PKD1 emulator

How to use PKD1 emulator see in:

[How to install and use MT Box Nokia as PKD1 dongle.pdf](#)

To stop using your MT box as PKD1 emulator just press Stop DK2 button

Please note:

All serial numbers, active services, unlock counters and login details are examples.